

Holland Grown Bulbs for Fall Planting

Robert **BUIST** Company

SEEDSMEN FOR OVER A CENTURY

4 S. FRONT ST. PHILADELPHIA 5, PA. 331 ELIZABETH ST., N. E. ATLANTA 7, GA.

P. O. Box 417 Phone: WALnut 5-4541 Station 5110 P. O. Box 5255 Phone MURray 8-7055



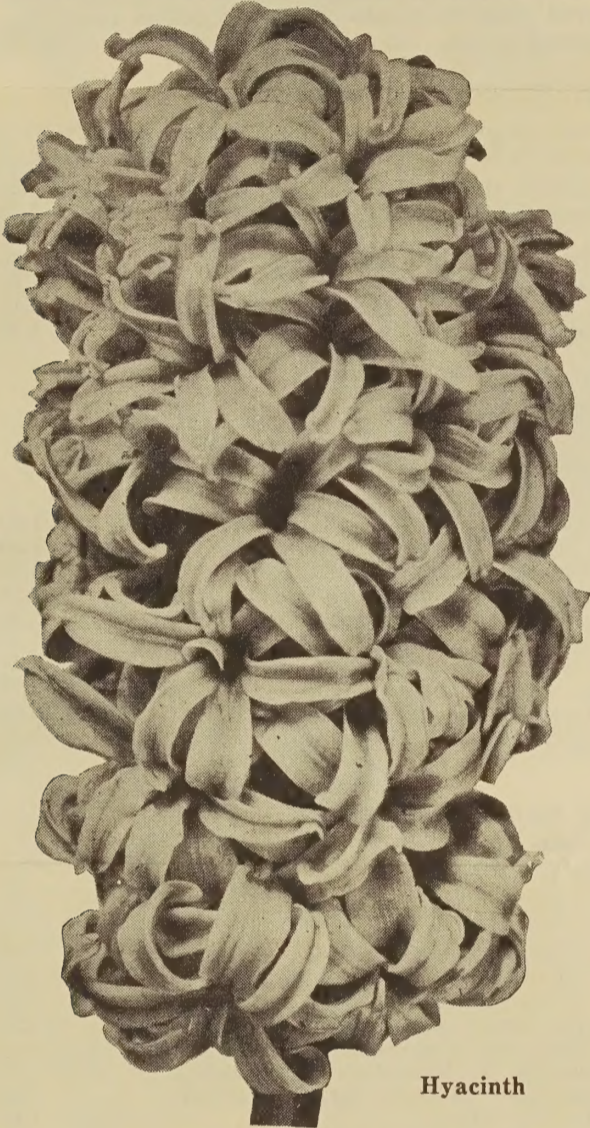
Since 1828

TERMS: Bulbs, Flower Seeds and Lawn Grass Prices include delivery in U. S. A.

BULBS 6 of one variety at doz. price 25 of one variety at 100 price

Please Note: All BULBS shipped from Philadelphia

LIMITED WARRANTY CLAUSE
"We warrant to the extent of the purchase price that seeds, bulbs or plants sold are as described on the container within recognized tolerances. Seller gives no other or further warranty, expressed or implied."



Hyacinth

Hyacinths

First-Size Bulbs Produce Stronger Spikes and Larger Flower Trusses
The Best Size for Beds, Borders and for Growing Indoors
Beautiful and Fragrant

Our First-Size Bulbs measure (18 to 19 Ctm.) 7 inches and over in circumference. They are the best and most satisfactory for outdoor planting and for forcing in pots.

HOW TO GROW HYACINTHS

Outdoors: Plant bulbs during October and November in well drained garden soil, 4 to 5 in. deep and 6 in. apart each way.

Indoors: Use a 4 inch pot for 1 bulb and a 6 inch pot for 4 bulbs. A light rich soil is most suitable. Pot fairly firm and let the tip of the bulb just peep out of the soil. Water and place in a cool cellar or cold frame covering the pots with ashes or soil until thoroughly rooted. Never allow the bulbs to become dry. After eight weeks or until top growth of three inches has developed they should be ready to force in a cool, light room and after spikes are well developed they should be placed in regular room temperature. A succession of bloom may be had by bringing part of the planting into the light, at a time, as needed.

HYACINTHS—First Size Bulbs—18-19 Ctm.	Per Doz.	Per 100
City of Haarlem. Soft creamy yellow	\$3.00	\$24.00
Grand Maitre. Deep lavender-blue	3.00	24.00
King of the Blues. Dark purplish-blue	3.00	24.00
Lady Derby. Delicate rose-pink	3.00	24.00
La Victoire. Bright carmine-red	3.00	24.00
L'Innocence. Pure white	3.00	24.00
Perle Brillante. Light blue, tinged lavender	3.00	24.00
Pink Pearl. Bright rose-pink	3.00	24.00
Queen of the Pinks. Clear rose-pink	3.00	24.00

Tulips

GIANT BREEDER TULIPS

Top Size Bulbs 12 Ctm. Up		
A class of Darwin Tulips having enormous flowers and a beautiful range of rare colors including every imaginable autumnal tint. Late. 30 inches tall.		
Mixed. A choice mixture of all shades	1.25	9.00

REMBRANDT TULIPS—Top Size Bulbs

A class of Darwin Tulips with flowers beautifully striped and blotched. Late. 28 inches tall.		
Mixed. Striped and blotched	1.40	10.00

Tulips

Our Top Size Bulbs measure 5 inches and over in circumference.

HOW TO GROW TULIPS

Outdoors: Tulips do well in any good garden soil and can be planted anytime in the Autumn before the ground is closed by frost. Plant 4 to 5 in. deep and 5 to 6 in. apart each way.

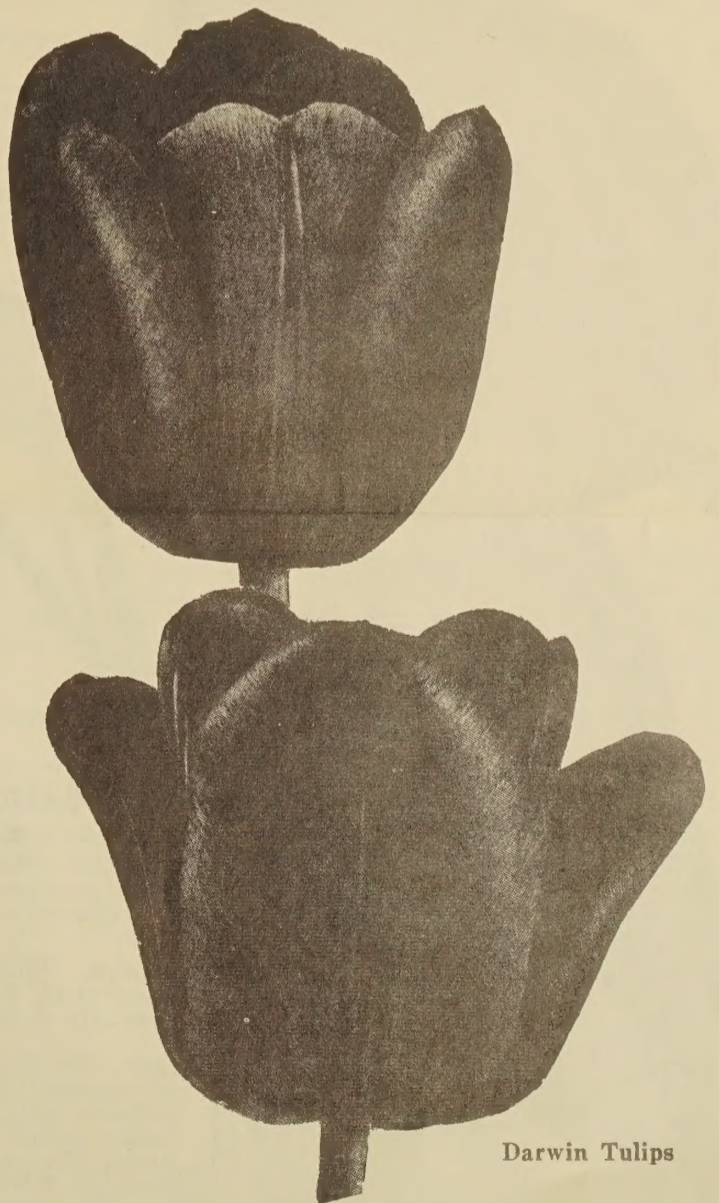
Pot Culture: Plant the bulbs as early as possible, as upon the slow growth of the flower bud depends the success of the forcing. Plant 6 bulbs to a 6 in. pot in any good friable soil, allowing the tips of the bulbs to show above the soil. Water and place in a cold frame or heel-in in the garden covering the pots with ashes or soil and allow eight to ten weeks to force root development. Bring pots indoors as required and set in a cool, dark cellar. Never allow the soil to dry out. When an inch or more of top growth is made bring up to the light of a cool window, and subject them to gentle forcing. Never in a dry, warm atmosphere at the start.

GIANT DARWIN TULIPS

Top Size Bulbs 12 Ctm. Up

Darwin Tulips are the most popular of all Tulips. The chief attraction is the beautiful shaped flowers, tall sturdy stems and the lovely range of colors. Late flowering. 28 to 30 inches tall.

	Per Doz.	Per 100
Afterglow. Dark salmon, shaded orange	\$1.25	\$9.00
All Bright. Carmine-red, edged blood-red	1.25	9.00
Bartigon. Fiery crimson	1.25	9.00
Campfire. Cochineal-red	1.25	9.00
City of Haarlem. Bright scarlet	1.40	10.00
Clara Butt. Delicate salmon-pink	1.25	9.00
Cum Laude. Bluest of all blue tulips in cultivation	1.40	10.00
Eclipse. Glowing, dark blood-red	1.40	10.00
Inglescombe Yellow. Bright golden-yellow	1.25	9.00
Madame Butterfly. Pale mauve, shaded violet	1.25	9.00
Niphetos. Lemon-yellow, paling to an ivory-yellow.	1.25	9.00
Princess Elizabeth. Clear deep pink	1.25	9.00
Queen of the Night. Black tulip. Deep maroon-purple	1.25	9.00
Scarlet Leader. Bright vermilion-scarlet	1.25	9.00
Sunkist. Buttercup-yellow	1.25	9.00
The Bishop. Deep violet blue	1.25	9.00
William Pitt. Deep carmine-scarlet	1.25	9.00
Yellow Giant. Deep golden-yellow	1.25	9.00
Zwanenburg. Pure white, black anthers	1.40	10.00
Darwin Mixed. Mixture of selected varieties	1.00	7.00



Darwin Tulips

Tulips (Continued)

GIANT COTTAGE OR MAY FLOWERING TULIPS

Top Size Bulbs 12 Ctm. Up

Cottage Tulips are rich in the more delicate and artistic colors missing in other late tulips. The single, graceful flowers differ in form being mostly long and oval-shaped. 24 to 30 inches tall.

	Per Doz.	Per 100
Advance. Orange-scarlet. Tremendous size, very early	\$1.25	\$9.00
Belle Jaune. Bright golden-yellow	1.25	9.00
Carrara. Pure white	1.25	9.00
G. W. Leak. Brilliant geranium red	1.40	10.00
Golden Measure. Buttercup-yellow. The best yellow for early forcing. Very fragrant	1.25	9.00
Marshall Haig. Scarlet with glittering red interior	1.40	10.00
Rosy Wings. A delightful pink. Long 5 in. buds. Early	1.40	10.00
May-Flowering Mixed. All colors. Many varieties	1.00	7.00

LILY-FLOWERED COTTAGE TULIPS

Top Size Bulbs 12 Ctm. Up

An extremely graceful and decorative class of Tulips with curved reflexing petals. Late. 28 inches tall.

Lily-Flowered Mixed. All colors	1.25	9.00
---------------------------------	------	------

PARROT TULIPS—Top Size Bulbs 12 Ctm. Up

Distinctive, large, feathery, thick-petaled flowers blooming in May. Strong, stiff stems. 24 inches tall.

Black Parrot. Brilliant velvet maroon-black	1.25	9.00
Blue Parrot. Bright violet and mauve, tinted bronze	1.25	9.00
Fantasy. Salmon-rose, green markings	1.25	9.00
Orange Favorite. Bright orange, green blotches	1.25	9.00
Texas Gold. Pure golden-yellow	1.25	9.00
Therese. Cherry scarlet. Parrot green markings	1.40	10.00
Parrot Mixed. All colors	1.25	9.00

SINGLE EARLY TULIPS

Top Size Bulbs 12 Ctm. Up

Bloom in early April along with the yellow Daffodils. The flowers are a blaze of brilliant gay colors on stems 12 to 15 inches tall.

Couleur Cardinal. Crimson-scarlet	1.60	12.00
De Wet. Bright fiery orange, stippled scarlet	1.60	12.00
Diana. Pure glistening white	1.50	11.00
Ibis. Dark brilliant pink	1.50	11.00
Keizerskroon. Crimson-scarlet, edged rich yellow	1.60	12.00
Olympiade. Golden yellow, very sweet scented	1.50	11.00
Prince Carnaval. Brilliant red, with yellow lines	1.60	12.00
Sunburst. Yellow, flushed red	1.50	11.00
White Hawk. Pure white	1.60	12.00
Single Early Mixed. A mixture of above varieties	1.25	9.00

DOUBLE EARLY TULIPS

Top Size Bulbs 12 Ctm. Up

Large double blooms, brilliant colors, beautifully variegated, resembling Water Lilies. Flower a week later than the Single Early Tulips. 12 inches tall.

Bonanza. Carmine, edged yellow	1.60	12.00
Electra. Carmine-red, shaded light violet	1.60	12.00
Murillo. Delicate light rose-pink, flushed white	1.60	12.00
Mr. Van Der Hoeff. Pure golden-yellow	1.60	12.00
Orange Nassau. Orange-scarlet, margin orange	1.60	12.00
Peach Blossom. Brilliant dark rose-pink	1.60	12.00
Scarlet Cardinal. Brilliant vermilion-scarlet	1.60	12.00
Snowball. Pure white	1.60	12.00
Double Early Mixed. Splendid showy colors	1.40	10.00

EXTRA EARLY SPECIES TULIPS—Top Size Bulbs

The wild tulip species have a grace and charm different from all other tulips. Ideal for the rock garden and hardy border.

Clusiana. Lady or Candystick Tulip. Small pointed blooms, white with cherry rose strips. 8 in.	1.85	14.00
Dasystemon. Canary yellow and white, 8 small flowers on a stem. 5 in.	2.00	15.00
Eichleri. Lily shaped, large scarlet. 10 in.	1.50	11.00
Kaufmanniana. Large cream, shaded rose. 6 in.	1.60	12.00

➡ **Red Emperor.** Largest, earliest, most brilliant of all red tulips. Streamlined, oval blooms, 4 in. long; opening up to 7 in. across in sunlight. 18 in. tall. 1.60 12.00

NEW... NOTT'S—3-Way "Bulb Saver"

1—Fungicide 2—Insecticide 3—Repellent

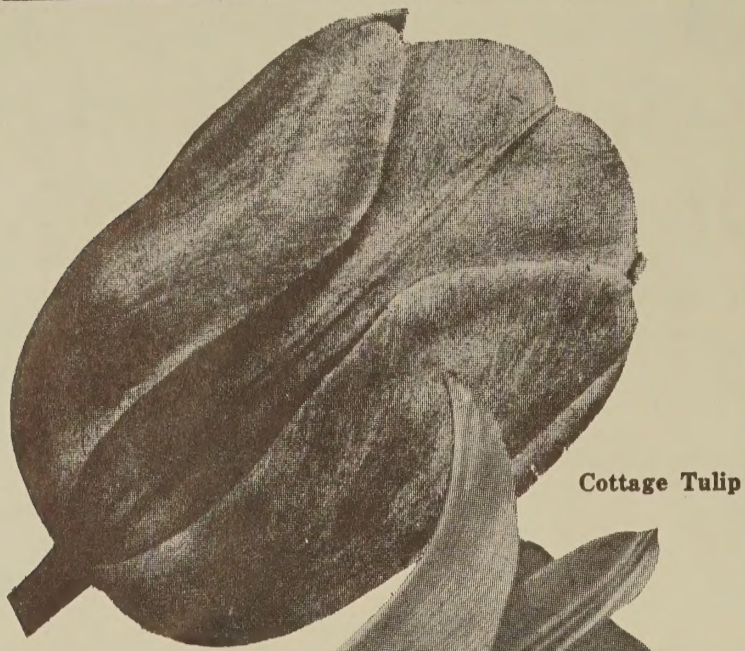
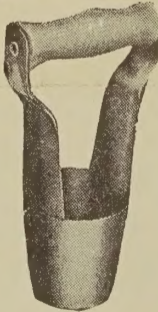
Protects tulips, daffodils and other varieties of bulbs—gladiolus, crocus and other type corms from fungus diseases, thrips and other insects and also from the ravage and damage caused by moles, gophers, rats and mice. 2 oz. size covers 100 bulbs; 8 oz. 500.

2 oz. Canister—each \$.79

8 oz. Canister—each \$2.49

BULB PLANTER—"Hole-in-One"

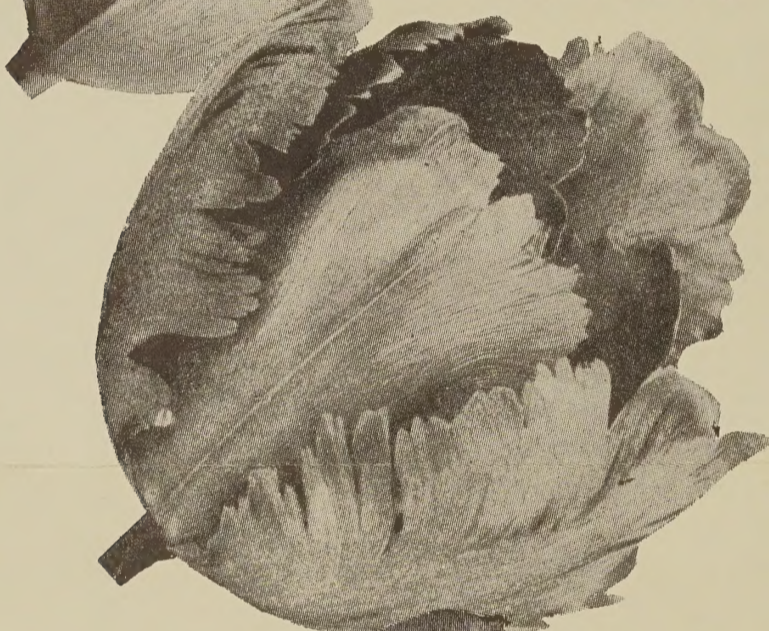
Lifts a perfect cone out of soft earth for planting bulbs. Each \$1.00



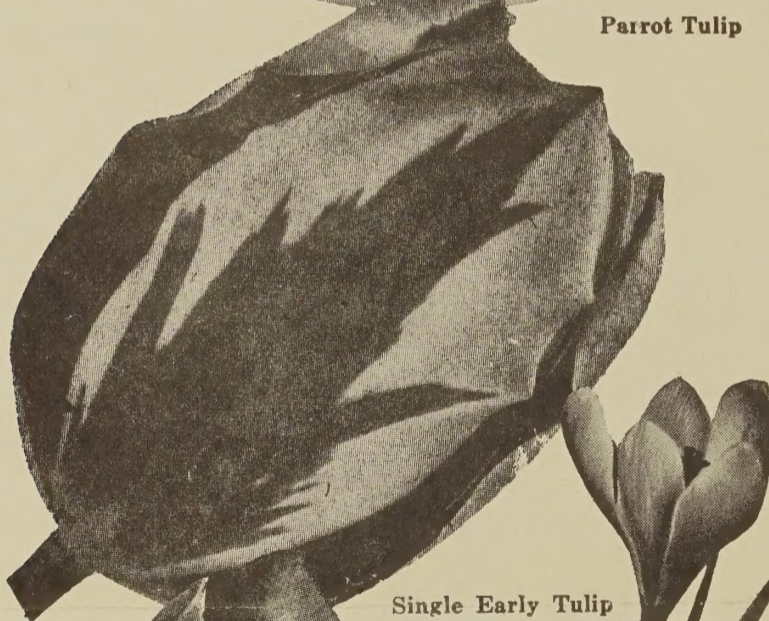
Cottage Tulip



Lily-Flowered Tulip



Parrot Tulip



Single Early Tulip



Red Emperor Tulip

HARDY GARDEN LILIES

8 Inches Up in Circumference.

Plant bulbs on their side 6 to 8 in. deep with 1 inch of sand around each bulb. Decomposed manure should be placed 4 in. below bottom of bulb.

Candidum. (Madonna Lily). Snow-white. Fragrant. The first Lily to bloom outdoor	Each	Per Doz.
	\$.60	\$6.50

Regale. The most beautiful of all garden Lilies. White, suffused with pink, center canary-yellow. Very fragrant. Blooms early July. Ready in November	.70	8.00
---	-----	------

LILIES FOR INDOORS

Plant in rich soil in 6 in. pots with crown on top, protruding above the surface of soil. Place in the dark until well rooted then bring to light warm room and water daily.

AMARYLLIS 3-3 1/4 in. dia.	Each	Per Doz.
Giant Flowered Hybrid	\$1.15	\$13.50

EASTER LILIES 8-9 in. circ.		
Croft. Very large, pure waxy white, long, trumpet-shaped flowers. The best Easter Lily. Very fragrant	.90	10.00



Giant Trumpet Daffodil
King Alfred

Giant Trumpet Daffodil
Mount Hood

Poetaz
or
Clustered Narcissus

Poet's Narcissus

Paper White Narcissus

CULTURE: The flowers are deliciously sweet-scented, produced on long stems bearing 6 to 12 blooms in a cluster. Plant the bulbs in bowls filled with pebbles and water. Store in a cool, dark place until well rooted then bring them to the light where they are to bloom.

Mammoth Bulbs. 14-15 ctm.	\$1.60	\$12.00
--------------------------------	--------	---------

Daffodils

We offer Top Size No. 1 Bulbs

Daffodils give a marvelous display early in the Spring and are lovely for beds, borders, and naturalizing. Stems are strong, stiff, 12 in. or more high. Ideal for pot culture.

HOW TO GROW DAFFODILS AND NARCISSUS

OUTDOORS: Plant in any good garden soil and can be planted any-time in the Autumn before the ground is closed by frost. Plant 4 to 8 in. deep and 6 to 8 in. apart each way.

POT CULTURE: Plant the bulbs as early as possible, as upon the slow growth of the flower bud depends the success of the forcing. Plant 4 bulbs to a 6 in. pot in any good friable soil, allowing the tips of the bulbs to show above the soil. Water and place in a cold frame or heel-in in the garden covering the pots with ashes or soil and allow eight to ten weeks to force root development. Bring pots indoors as required and set in a cool, dark cellar. Never allow the bulbs to dry out. When an inch or more of top growth is made bring up to the light of a cool window, and subject them to gentle forcing.

GIANT TRUMPET DAFFODILS

These ever-popular Daffodils have trumpets as long or longer than the perianth or the surrounding row of petals.

	Per Doz.	Per 100
Beersheba. Ivory-white trumpet, pure white petals. Beautiful formed flower	\$2.00	\$15.00
Golden Harvest. Large trumpet, deep golden-yellow	1.75	13.00
King Alfred. Rich golden-yellow. Very popular.	1.50	11.00
Mount Hood. Immense flowered creamy-white trumpet changing to pure white; pure white petals	1.75	13.00
Mrs. R. O. Backhouse. "The Pink Daffodil". Apricot-pink trumpet changing to shell-pink at the deeply fringed edge, ivory-white petals	1.75	13.00
Mrs. E. H. Krelage. Light canary-yellow trumpet changing to white, white petals	1.60	12.00
Music Hall. Deep golden-yellow, white petals.	1.60	12.00
Rembrandt. Trumpet and petals pale yellow	1.60	12.00
Spring Glory. Yellow trumpet, white petals	1.60	12.00

SHORT-CUPPED DAFFODILS

In this group of short-cupped Daffodils the trumpet is greatly reduced in size. Graceful and fragrant.

Carlton. Large soft yellow cup, broad petals	1.60	12.00
Croesus. Wide red crown, primrose petals	1.60	12.00
Dick Wellband. Overlapping white petals, red cup .	1.60	12.00
Scarlet Elegance. Scarlet cup, yellow petals	1.60	12.00
Tunis. Large ivory-white cup, edged coppery gold .		
Broad pure white petals	1.75	13.00

DOUBLE DAFFODILS

A very showy selection of double or semi-double flowers in pure toned colors.

Alba Plena Odorato. Pure white, fragrant	1.60	12.00
Indian Chief. Yellow-orange, petals curled and twisted	1.60	12.00
Inglescombe. Pure soft yellow	1.60	12.00
Twink. Creamy-yellow and red	1.60	12.00

CLUSTERED or Poetaz NARCISSUS

Lovely large clusters of 4 to 6 flowers on strong stems, deliciously fragrant. Hardy for the open border or splendid for forcing in pots.

Cheerfulness. Double, creamy white, yellow eye. Gardenia scented	1.40	10.00
Geranium. Orange red cup, white petals	1.40	10.00
Halvose. Deep orange cup, primrose petals	1.40	10.00

POET'S NARCISSUS

The old fashioned Pheasant's Eye with snowy white flower and a rich spicy odor. For hardy borders.

Actea. Scarlet eye, large pure white petals	1.60	12.00
--	------	-------

SWEET-SCENTED JONQUILS

Delightfully fragrant small Narcissus, dwarf in habit, clusters of two or more flowers on a stem.

Golden Scepter. Largest of Jonquils. Deep gold.-yel.	1.50	11.00
---	------	-------

DAFFODILS AND NARCISSUS

Mixed. A mixture of all types, suitable for growing in masses for gardens, naturalizing in shrubbery in woods and semi-wild outlying grounds

1.60 12.00

MISCELLANEOUS BULBS

GIANT FLOWERED CROCUS—Top Size Bulbs

Large bulbs 4 in. in circumference. One of the earliest flowers seen in the Spring. Splendid for rock gardens, flower borders and for naturalizing under trees, shrubs or in the lawn. Height 4 in. Plant bulbs 2 in. deep, 3 in. apart.

(10 to 11 Ctm. Up)	Per Doz.	Per 100
Enchantress. Porcelain-blue.	\$.85	\$5.00
King of the Whites	1.00	6.50
Mammoth Yellow85	5.00
Purpurea Grandiflora. Purple	1.00	6.50
Striped Beauty. Lilac	1.00	6.50
Mixed85	5.00

DUTCH IRIS—Top Size Bulbs

Beautiful large Orchid-like flower blooming in June. Lovely for cutting. Plant early 3 to 4 in. deep and 6 in. apart.

Imperator. Brilliant blue90	6.00
Wedgewood. Deep blue90	6.00
White Excelsior. Pure white	.90	6.00
Golden Harvest. Pure gold90	6.00
Mixed85	5.00

ERANTHIS (Winter Aconite)

Dainty small yellow flowers with green frilled collars on 6 in. stems. Early blooming usually before the Crocus. They are perfectly hardy and thrive in shade or sun. Plant 2 in. deep and 3 in. apart.

Hyemalis. Buttercup-yellow	\$.85	\$5.00
GLORY OF THE SNOW (Chionodoxa)		
Early blooming, dainty blue flowers borne in sprays on stems 4 in. high. Excellent for naturalizing. Plant 3 in. deep and 3 in. apart.		
Luciliae. Sky-blue85	5.00
Sardensis. Deep Blue85	5.00

GRAPE HYACINTHS—Top Size

Lovely clustered spikes of early flowers resembling a miniature inverted bunch of grapes. They thrive planted in clumps in the rock garden, border or under trees. 5 in. high. Plant bulbs 2 in. deep and 3 in. apart.

Muscari—Albus. Pure white .	.90	6.00
Muscari—Heavenly Blue85	5.00

SCILLA CAMPANULATA—Top Size Bulbs

(Wood Hyacinth or Spanish Blue Bell.) Ideal for naturalizing in rockeries, garden or woodland. Likes partial shade. Erect flower spikes, 12 in. high with bell-shaped blooms. Blooms late Spring. Plant bulbs 3 in. deep and 6 in. apart.

	Per Doz.	Per 100
Blue	\$.85	\$5.00
Rose85	5.00
White85	5.00

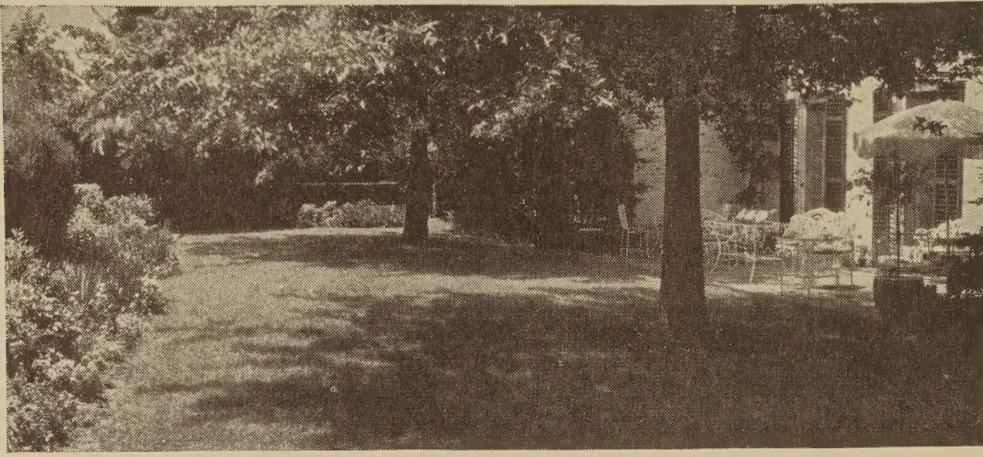
SCILLA SIBIRICA

Spring Beauty. Intense blue flowers on graceful spikes 4 to 5 in. high in early April. Most effective in masses. Plant bulbs 2 to 3 in. deep and 3 in. apart

SNOWDROPS

The first flower of Spring; with lovely little white blooms on stems 4 in. long. Thrive in rock gardens, hardy borders or planted in the grass. Plant bulbs 2 in. deep and 3 in. apart.

Galanthus Single. White85	5.00
Galanthus Double. White ...	1.00	6.50



SPENCER SWEET PEAS

	Pkt.	Oz.	¼ lb.
Summer Flowering Mixed	\$.10	\$.35	\$1.00
Cuthbertson Mixed	.10	.50	1.50
Early Flowering Mixed	.10	.50	1.50

PANSY

	Pkt. 1/16 Oz.	¼ Oz.
Prize Giant Mixed	\$.25	\$1.25
Mastodon Jumbo Mixed	.50	1.75
Swiss Giant Mixed	.25	1.00
Giant Trimardeau Mixed	.15	.60

➔ RETAIL GARDEN GUIDE

Listing a full line of Vegetable, Flower and Grass Seed, Fertilizers, Insecticides, Garden Tools and Supplies. Mailed on Request.

BUIST'S

Dependable

LAWN GRASS MIXTURES

September and October are the Best Times to Plant a Lawn

The fall season is the best time to sow Lawn Grass Seed. The soil is warm and friable, with plenty of moisture from dews and rains, which not only hastens germination but enables the roots to become well established before freezing weather sets in. Competition from weeds is less, and root growth is well established before Spring.

Our Lawn Mixtures are composed of the finest varieties of grasses, each of which has its season of beauty, and the result of this blending is the production of a sod that is always evergreen and velvety in appearance.

QUANTITY TO USE—For the average mixture on new lawns sow 1 lb of grass seed to 200 sq. ft., 150 lb. per acre. For the Emerald Green Mixture or the Merion 40% Mix, 1 lb. will seed an area of 400 sq. ft. To improve old lawns, use half of these quantities.

One acre of land contains approximately 210 x 210 ft. or 43,500 sq. ft.

EMERALD GREEN. Treated with Arasan and Rootone

This special blend is designed to develop only fine-bladed grasses that have proved their value for making show lawns . . . dense, springy and lasting green . . . beautiful from the start and growing into permanent beauty year after year. Contains hardy grasses of high purity and germination with over 50% extra fancy Kentucky Bluegrass blended with Pennlawn Red Fescue, Poa Trivialis and Highland Colonial Bent. Seed is treated with Arasan to protect against seed and soil borne diseases and Rootone to promote quick, vigorous growth. Lb. \$1.50; 5 lb. \$7.00; 10 lb. \$13.90; 25 lb. \$34.00; 50 lb. \$66.50; 100 lb. \$131.50.

MERION 40% MIXTURE. A premium lawn grass mixture containing the most fabulous lawn grass . . . Merion Kentucky Bluegrass . . . also contains the new Pennlawn Red Fescue and heavy weight Kentucky Bluegrass. The new Merion formula will give you a luxury lawn of beauty and toughness. A tight, thick and more weed resistant turf, which will resist drought, leaf spot and fight off crabgrass. Lb. \$2.75; 5 lb. \$13.25; 10 lb. \$26.25; 25 lb. \$64.75.

MERION KENTUCKY BLUEGRASS. Not a mixture but 100% Merion Blue. For those desiring pure Merion. 1 lb. is enough for 500 sq. ft. Produces thicker turf, stays greener all summer and stands closest mowing. Lb. \$3.50; 5 lb. \$17.00; 10 lb. \$33.50; 25 lb. \$82.75.

EVERGREEN. A mixture of deep-rooted permanent and quick growing sun-loving grasses blended to produce a sod that is always evergreen in appearance. Lb. \$1.10; 5 lb. \$5.10; 10 lb. \$10.00; 25 lb. \$24.25; 50 lb. \$47.00; 100 lb. \$92.50.

SUNNY SOUTH EVERGREEN. Composed of lawn grasses that are especially well suited to our Southern States. Lb. \$1.00; 5 lb. \$4.75; 10 lb. \$9.25; 25 lb. \$22.50; 50 lb. \$43.50; 100 lb. \$85.50.

CENTRAL PARK. Composed of permanent and sturdy, quick growing grasses blended to develop a good durable lawn. Suited to various soil conditions and withstands a lot of hard wear. Lb. 95c; 5 lb. \$4.35; 10 lb. \$8.50; 25 lb. \$20.50; 50 lb. \$39.50; 100 lb. \$77.50.

SHADY NOOK. Composed of hardy grasses that nature has endowed with the ability to thrive in the shade. Develops quickly into a permanent, rich green turf that with regular watering and feeding will not only last but be a real joy almost forever. Lb. \$1.15; 5 lb. \$5.50; 10 lb. \$10.80; 25 lb. \$26.25; 50 lb. \$51.00; 100 lb. \$100.50.

SEASHORE. Before sowing this mixture of fine-bladed, strong grasses, top-dress the sand with 4 inches of fertile loam soil because good lawn grasses will not grow in seashore sand. Lb. \$1.25; 5 lb. \$5.90; 10 lb. \$11.60; 25 lb. \$28.25; 50 lb. \$55.00; 100 lb. \$108.50.

WHITE DUTCH CLOVER For Lawns
Sow 1 oz. for each pound of grass if an extra heavy stand of clover is wanted. Oz. 15c; ¼ lb. 45c; ½ lb. 75c; lb. \$1.95; 5 lb. \$6.25.

BUIST'S

BULBS AND GRASS SEED

PRICE LIST

ROBERT BUIST COMPANY

Seedsman for Over a Century

4 S. FRONT STREET
PHILADELPHIA 5, PA.
Phone: WALnut 5-4541

SINCE
★★★★
1828

SEC. 34.66, P.L.&R.

U. S. Postage

PAID

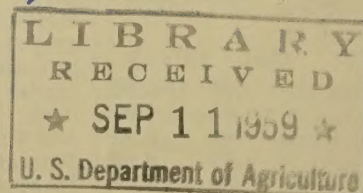
Philadelphia, Pa.

Permit No. 1654

Library, U. S. Dept. of Agriculture

Washington 25

D.C.



No. 4 POSTMASTER: If addressee has moved and new address is known, notify sender on FORM 3547, postage for which is guaranteed.

Sept. 1, 1959